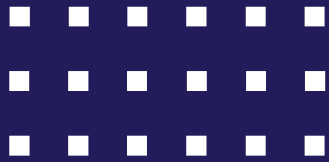


# Welcome to EM Strasbourg!

Kick Off Meeting – 2026-06-08



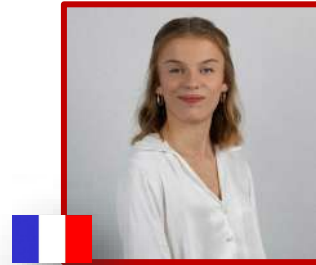


# Agenda :

- Introducing the International Relations Office
- Consular Support
- Enrolling at EM Strasbourg
- Payment of tuition fees
- Arrival in France and in Strasbourg

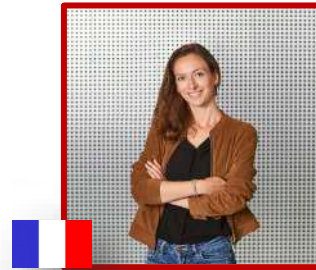


# International Relations Coordinator

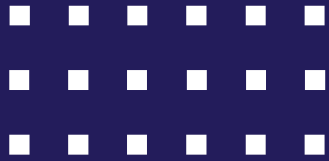


Alicia STROBEL  
International Mobility Program Coordinator  
*International Student Welcome and Support Officer*

# International Relations Coordinator



Jeanne-Marie MATHIEU  
International Mobility Program Coordinator  
*International Student Welcome and Support Officer*



# The International Relations Office

[sri-inta@emstrasbourg.eu](mailto:sri-inta@emstrasbourg.eu)



# International Relations



**Dr. Kevin MAC GABHANN**  
Director of International  
Relations

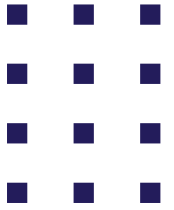


**Elodie THEVENET**  
Head of the International Relations  
Office



**Stéphanie STEHLI**  
Deputy Head of the  
International Relations Office

# Incoming Students Coordinators



Alicia STROBEL



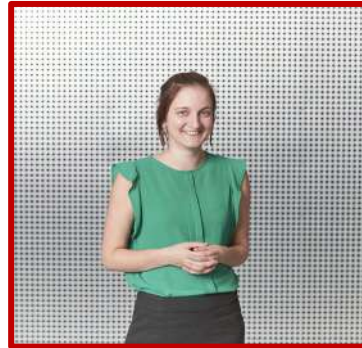
Jeanne-Marie MATHIEU



Zita PATRIS-FONYODI



Jördis SEILER



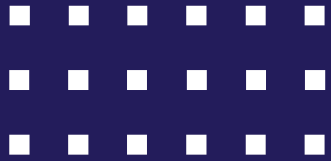
Kelly WONNACOTT-ELIE



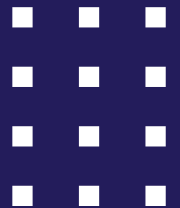
Caroline RISACHER



Mallory GALENNE



# Consular Support



# Consular Support

## Support for Students with Visa Procedures:

- Sending of the admission letter (please complete your Campus France on the platform to allow direct transmission by our office)

• If your Campus France account is not listed, please contact us at [sri-inta@em-strasbourg.eu](mailto:sri-inta@em-strasbourg.eu)

Are you affiliated with a Campus France?

Cameroun - Douala | campusfrance.dia@ifcameroun.com

- Confirmation of admission through Campus France
- Communication with Campus France services
- Upload of application files to the Études en France platform
- Review of visa application files (upon request)
- Issuance of supporting letters upon request by email, including:
  - **Accommodation explanation** letter
  - **Late arrival** justification letter
  - **Support** letter for a **visa application following an initial refusal**
  - **Admission deferral** letter for the following academic year (2027-2028)

# Consular Support

## Explanation of Supporting Documents

### Accommodation Explanation Letter:

Some French consulates accept, as proof of accommodation, an explanatory letter issued by the school together with a hotel reservation covering at least seven days.

Upon request by email, our office can provide this letter, provided that you submit proof of your hotel reservation.

**Please note** that many French consulates do not accept this type of supporting document.

We strongly recommend that you check with the French consulate in your country before requesting this letter.

If the consulate does not accept this document, your visa application may be rejected, or the processing of your application may be delayed.

# Consular Support

## Accommodation Support:

For any accommodation-related questions or requests for assistance, please contact the school's **Student Support Office (Action Sociale)**:

→ [action-sociale@em-strasbourg.eu](mailto:action-sociale@em-strasbourg.eu)

The Student Support Office works closely with several accommodation agencies and housing providers.

→ Complete list : [Finding a Place to Stay | Bienvenue — EM Strasbourg](#)

## Upcoming Webinars: Accommodation and Financing Your Studies

- **Tuesday, June 23**, from 3:00 p.m. to 4:00 p.m. – Accommodation and Financing Your Studies Webinar (in English)
- **Wednesday, June 24**, from 3:00 p.m. to 4:00 p.m. – Accommodation and Financing Your Studies Webinar (in French)

→ Further information will be sent by email and made available on the [Welcome to EM Strasbourg](#) website, where webinar recordings and presentation slides can also be accessed.

# Consular Support

A **Housing Opportunities Forum (Forum Bon Plan)** will be organized during the orientation period on **Tuesday, September 8**, bringing together EM Strasbourg students and local housing providers.

Further information will be communicated by our Student Support and Social Services Office via email.

**Reminder:** While we are happy to provide guidance, information, and support throughout your housing search, securing accommodation remains the responsibility of each student.

# Consular Support

## Late Arrival Authorization Letter

From **August 25 onward**, and upon request sent to [sri-inta@em-strasbourg.eu](mailto:sri-inta@em-strasbourg.eu), our office may issue a Late Arrival Authorization Letter.

Requests must be justified by one of the following circumstances:

- Delay in the processing of a visa application
- Delay in receiving academic transcripts from your home institution
- Late final thesis defense or end-of-year academic requirements

**Supporting documentation is mandatory** for your request to be considered.

# Consular Support

## Support Letter Following an Initial Visa Refusal:

In the event of an initial visa refusal, and upon request sent to [sri-inta@em-strasbourg.eu](mailto:sri-inta@em-strasbourg.eu), our office may provide a **support letter** for your appeal against the consulate's decision.

Your request must be justified by:

- Proof of visa refusal

# Consular Support

## Admission Deferral:

In certain exceptional cases, candidates may request a **one-year deferral of admission** in order to retain their admission offer and join EM Strasbourg in the following academic year (2027-2028).

This deferral means that the School reserves the student's place for the following intake.

Conditions under which a deferral may be requested:

- Failure to obtain a student visa
- Serious accident or illness preventing enrollment
- Death of a close family member
- Any other exceptional situation duly supported by official documentation

# Consular Support

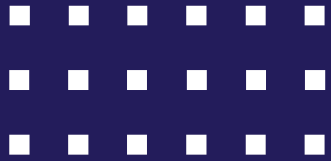
## Admission Deferral:

It is the responsibility of the School's Management to approve or refuse any deferral request.

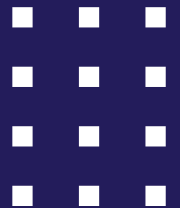
A deferral of enrollment does not exempt the candidate from **paying the deposit** within two calendar weeks following the announcement of results, nor from **submitting their final diploma by October 31, 2026.**

Tuition fees applied will be those in effect for the **academic year in which the student actually enrolls.**

**In the event of a visa refusal** in the following year, **the deposit will be refunded** in accordance with the terms and conditions set out in the regulations.



# Enrolling at EM Strasbourg



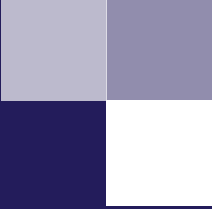
# Enrolling at EM Strasbourg

## Finalizing Enrollment at EM Strasbourg

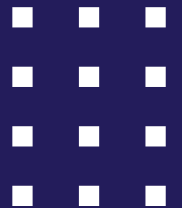
- **Mid-July** : You will receive an explanatory email from our services once you have access to the enrollment platform.
- **August 31** : Enrollment deadline

Enrollment is managed by the Registrar's Office.

- For any **enrollment-related** inquiries :
  - Grande Ecole Program (PGE) Registrar's Office
    - [inscription-pge@em-strasbourg.eu](mailto:inscription-pge@em-strasbourg.eu)
  - Bachelor in International Affairs (BAI) Registrar's Office
    - [inscription-bai@em-strasbourg.eu](mailto:inscription-bai@em-strasbourg.eu)



# Tuition Fees



# Tuition Fees

## Remaining Tuition Fees - Bachelor in International Affairs (BAI):

€8,500 EM Strasbourg Tuition Fees + €178 University of Strasbourg Fees - €3,500 Deposit = €5,178

CVEC (mandatory student contribution for all students in France) = €105

**Total amount due = €5,283**

## Remaining Tuition Fees - Grande Ecole Program (PGE)

€10,500 EM Strasbourg Tuition Fees + €254 University of Strasbourg Fees - €3,500 Deposit = €7,254

CVEC (mandatory student contribution for all students in France) = 105€

**Total amount due = €7,359**

**Please note:** University fees for the 2026-2027 academic year have not yet been approved. A slight increase may therefore apply.

# Tuition Fees

## Finalizing Enrollment at EM Strasbourg

Once enrollment opens, (mid-July), you will be able to select your payment method to settle the remaining balance.

It is possible to pay the tuition fee balance (excluding CVEC) in up to 7 installments.

I complete [my enrollment](#) in 3 steps:

Step 1 : **My Profile** : I check and complete my personal information.

Step 2 : **Documents** : I upload the required documents for my enrollment.

Step 3 : **Finances** : I choose my payment method and upload any required supporting documents. Finally, I electronically sign my application.

A confirmation e-mail will be sent to you.

Please **check your emails regularly** in case the Admissions Office requests any changes or additional information regarding your application.

# Tuition Fees

## CVEC (Student and Campus Life Contribution)

The Student and Campus Life Contribution (CVEC) is a mandatory requirement for all students enrolled in higher education programs in France.

**It is separate from tuition fees** and must be paid prior to completing administrative enrollment at any higher education institution.

The proof of payment or exemption from the CVEC is required to finalize your enrollment at EM Strasbourg. Without this document, your enrollment cannot be validated.

You can pay the CVEC at the following link: <https://cvec.etudiant.gouv.fr/>





# Arrival in France and in Strasbourg



# Arrival in France and in Strasbourg

We encourage you to visit our dedicated website for students joining EM Strasbourg!

→ [Bienvenue à l'EM Strasbourg](#)

The website is regularly updated and provides information on:

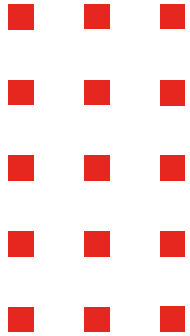
- The campus and its services
- Transportation in Strasbourg
- Things to do in the city
- Housing information
- Financing your studies
- Health and health insurance
- French visa procedures
- How to get to Strasbourg
- A regularly updated calendar of events
- Contact details for various administrative services

# Arrival in France and in Strasbourg

**Don't miss any updates anymore:  
Calendar, presentations, webinars, events**

→ [Bienvenue à l'EM Strasbourg](#)

→ Please check your e-mails regularly : we will keep you informed about upcoming events!



# Any questions ?

## Incoming Team

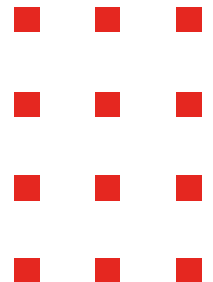
[sri-inta@em-strasbourg.eu](mailto:sri-inta@em-strasbourg.eu)

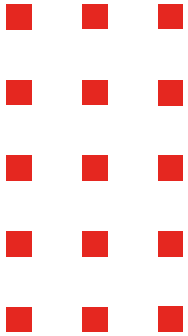
61 Avenue de la Forêt Noire  
67000, Strasbourg

[em-strasbourg.com](http://em-strasbourg.com)

## Student Support Office (Service Action Sociale)

[action-sociale@em-strasbourg.eu](mailto:action-sociale@em-strasbourg.eu)





# Thank you !

*We look forward to welcoming you !*

**Incoming Team**

[sri-inta@em-strasbourg.eu](mailto:sri-inta@em-strasbourg.eu)

61 Avenue de la Forêt Noire  
67000, Strasbourg

[em-strasbourg.com](http://em-strasbourg.com)

**Student Support Office (Service  
Action Sociale)**

[action-sociale@em-strasbourg.eu](mailto:action-sociale@em-strasbourg.eu)

